

*LCTB = Local Children's Trust Boards

County Implementation Groups

- Be Healthy
- Stay Safe
- Enjoy & Achieve
- Make a Positive Contribution
- Achieve Economic Well Being
- Partnership Management
- Workforce Development
- Voluntary Sector

- Childrens Trust Board

- Lead Member LA – Peter Martin - Chair
- Graham Tombs – Executive Director SCF –
Co - Chair

- Joint Commissioning Board (JCB)
 - Director of Commissioning LA – Wendi Ogle-Welbourn - Chair
 - Director of Commissioning PCT – To be agreed – Co-Chair

County Implementation Group
structures being consulted on at
the Partnership Board

BE HEALTHY
AD Health LA
AD Public Health

Healthy Lifestyles
To include
Healthy Eating
Breastfeeding
Obesity
Healthy Schools
Sports
Immunisations
Safety in the Home
Infant Mortality
Child Deaths

Emotional / Behaviour Wellbeing
To include
Parenting
SEAL
CAMH
PHSE/SRE
Targeted & Specialist Services

Risky Behaviour
To include
Teenage Pregnancy
Sexual Health
Drugs/Alcohol & Substance Misuse
Smoking

Police Inspector
Children's Lead

LDD
To include
Aiming High
Continuing Care
SEN
Palliative Care

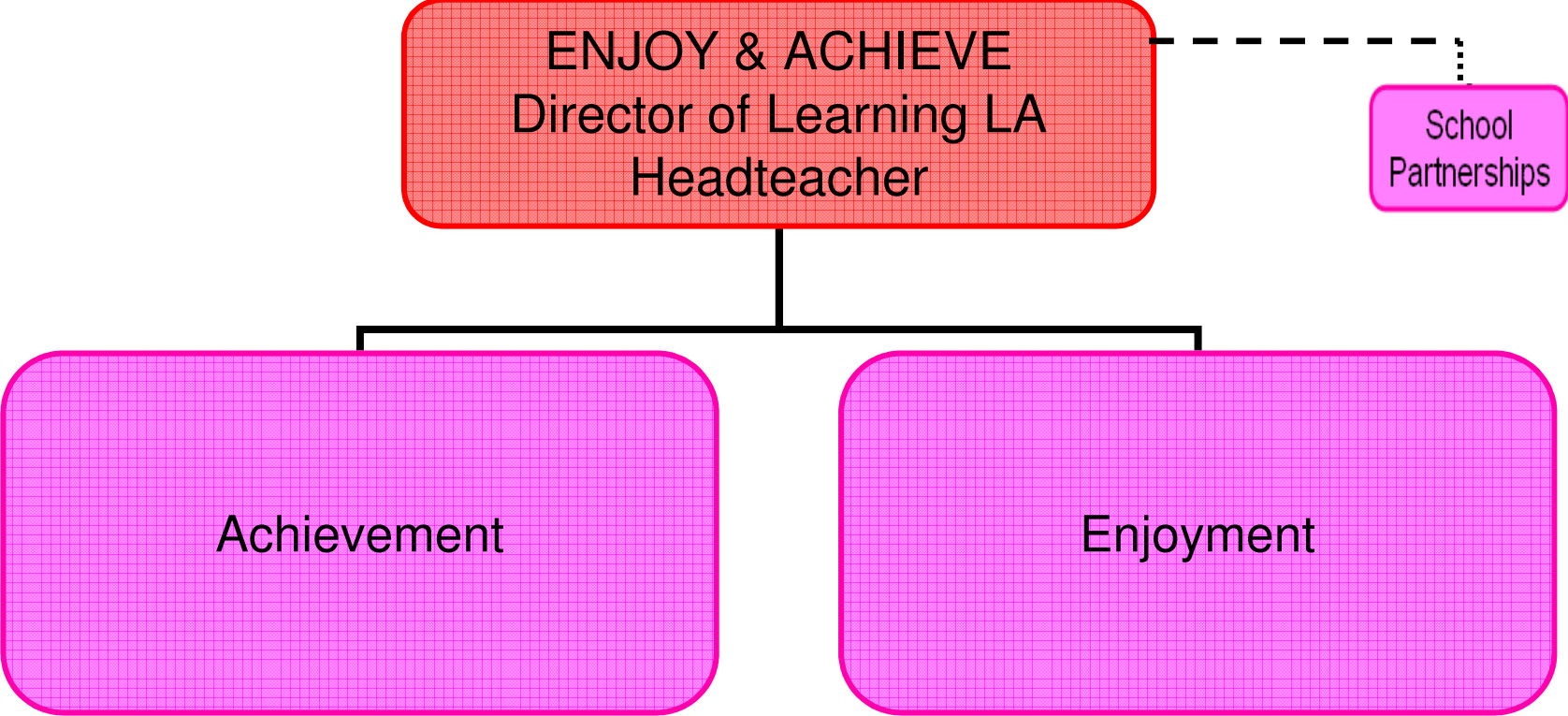
Poverty
To include
Transport
Children's Centre work
Job Centre Plus
Childcare
Housing
Leisure

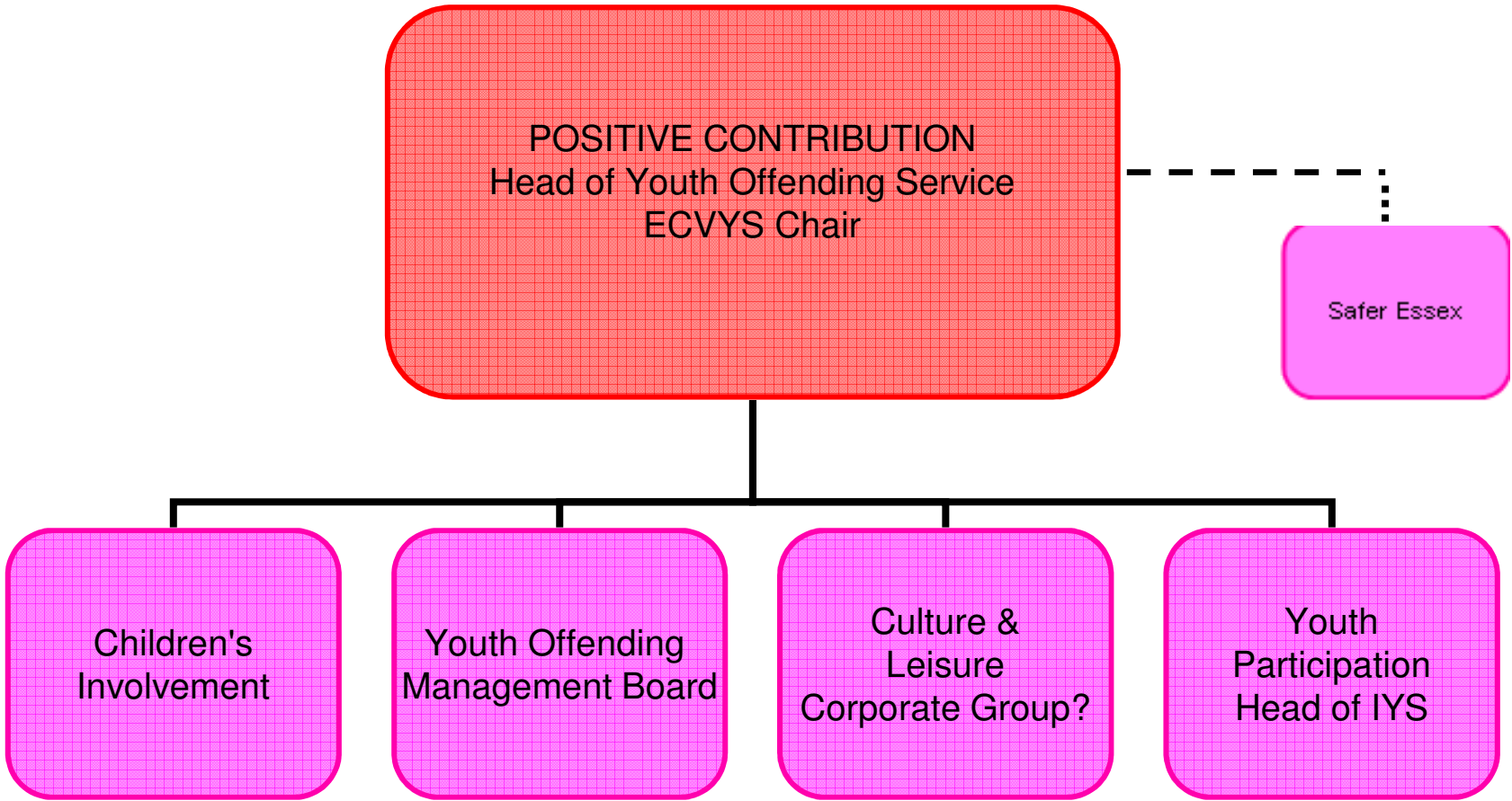
STAY SAFE
Director Vulnerable Children LA
Police CP Unit

LAC & Young
Carers

Child
Protection
ESCB
Independent Chair

Reduction of
Child Deaths
On the Roads
Bullying





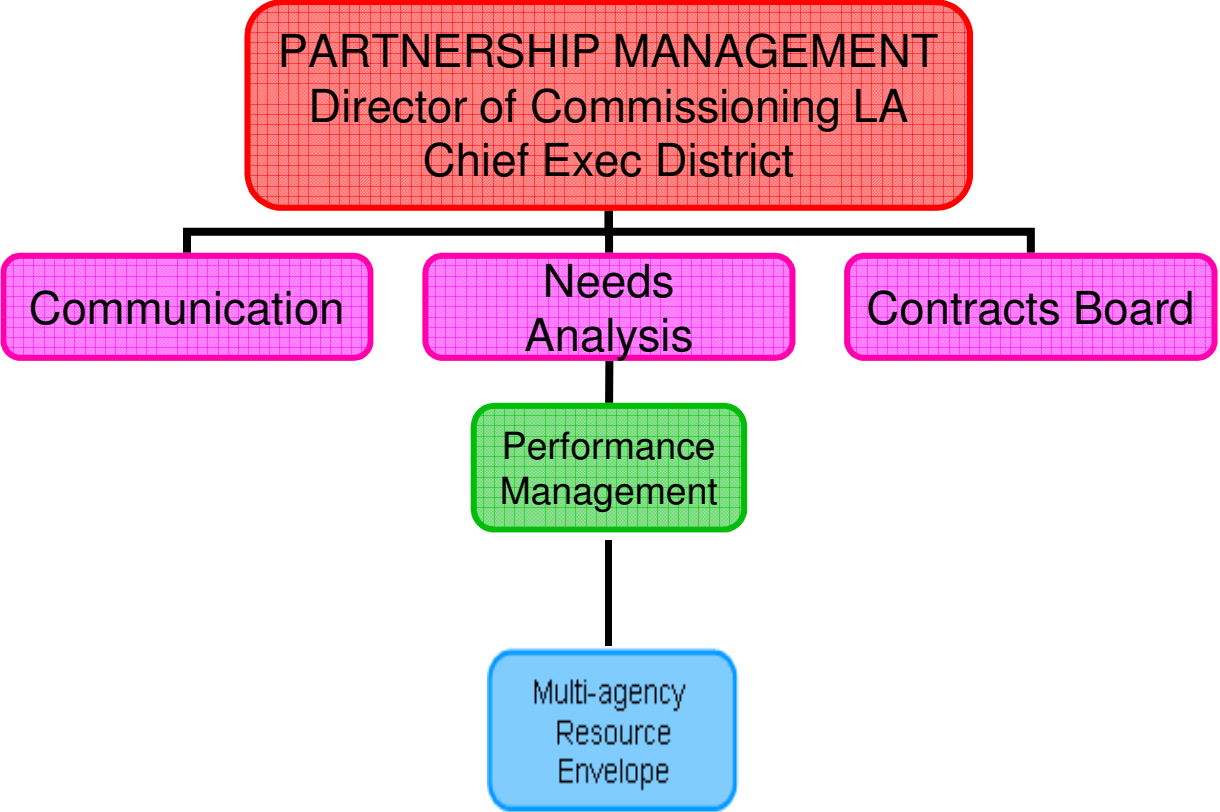
ECONOMIC WELL BEING
Assistant Director LSC
Director ExDRA (proposed)

14 - 19

Transitions

Housing
Corporate Group

NEET
Head of IYS



Integrated Workforce Planning and Development
Diversity and Equality
Assistant Director LA
PCT

Integrated Workforce Data

Promoting Good Practice
(Recruitment and Retention)

Learning and Development

Communication and Culture Change
(Integrated Practices)

Head of Early Years
ECVYS

